

LM337L 3-Terminal Adjustable Regulator

General Description

The LM337L is an adjustable 3-terminal negative voltage regulator capable of supplying 100 mA over a 1.2V to 37V output range. It is exceptionally easy to use and requires only two external resistors to set the output voltage. Furthermore, both line and load regulation are better than standard fixed regulators. Also, the LM337L is packaged in a standard TO-92 transistor package which is easy to use.

In addition to higher performance than fixed regulators, the LM337L offers full overload protection. Included on the chip are current limit, thermal overload protection and safe area protection. All overload protection circuitry remains fully functional even if the adjustment terminal is disconnected.

Features

- Adjustable output down to 1.2V
- Guaranteed 100 mA output current
- Line regulation typically 0.01%/V
- Load regulation typically 0.1%
- Current limit constant with temperature
- Eliminates the need to stock many voltages
- Standard 3-lead transistor package
- 80 dB ripple rejection

Normally, only a single 1 μ F solid tantalum output capacitor is needed unless the device is situated far from the input filter capacitors, in which case an input bypass is needed. A larger output capacitor can be added to improve transient response. The adjustment terminal can be bypassed to achieve very high ripple rejection ratios which are difficult to achieve with standard 3-terminal regulators.

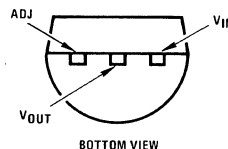
Besides replacing fixed regulators, the LM337L is useful in a wide variety of other applications. Since the regulator is "floating" and sees only the input-to-output differential voltage, supplies of several hundred volts can be regulated as long as the maximum input-to-output differential is not exceeded.

Also, it makes an especially simple adjustable switching regulator, a programmable output regulator, or by connecting a fixed resistor between the adjustment and output, the LM337L can be used as a precision current regulator. Supplies with electronic shutdown can be achieved by clamping the adjustment terminal to ground which programs the output to 1.2V where most loads draw little current.

The LM337L is packaged in a standard TO-92 transistor package. The LM337L is rated for operation over a -25°C to $+125^{\circ}\text{C}$ range.

For applications requiring greater output current in excess of 0.5A and 1.5A, see LM137 series data sheets. For the positive complement, see series LM117 and LM317L data sheets.

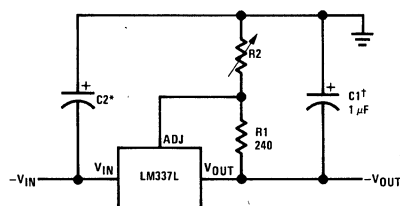
Connection Diagram



BOTTOM VIEW
 Order Number LM337LZ
 See NS Package Z03A

Typical Applications

1.2V-25V Adjustable Regulator

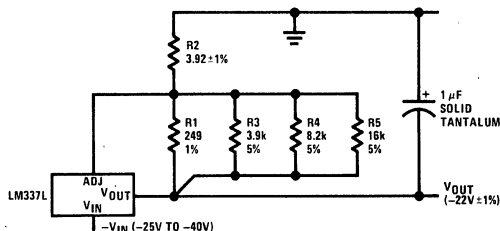


$$-V_{OUT} = -1.25V \left(1 + \frac{R_2}{240\Omega} \right)$$

†C1 = 1 μ F solid tantalum or 10 μ F aluminum electrolytic required for stability

*C2 = 1 μ F solid tantalum is required only if regulator is more than 4" from power supply filter capacitor

Regulator with Trimnable Output Voltage



Trim Procedure:

- If V_{OUT} is -23.08V or bigger, cut out R3 (if smaller, don't cut it out).
- Then if V_{OUT} is -22.47V or bigger, cut out R4 (if smaller, don't).
- Then if V_{OUT} is -22.16V or bigger, cut out R5 (if smaller, don't).

This will trim the output to well within 1% of -22.00V_{DC} , without any of the expense or trouble of a trim pot (see LB-46). Of course, this technique can be used at any output voltage level.

Absolute Maximum Ratings

Power Dissipation	Internally Limited	Operating Junction Temperature Range	- 25°C to + 125°C
Input-Output Voltage Differential	40V	Storage Temperature	- 55°C to + 150°C
		Lead Temperature (Soldering, 10 seconds)	300°C

Electrical Characteristics (Note 1)

Parameter	Conditions	Min	Typ	Max	Units
Line Regulation	$T_A = 25^\circ\text{C}$, $3V \leq V_{IN}-V_{OUT} \leq 40V$, (Note 2)		0.01	0.04	%/V
Load Regulation	$T_A = 25^\circ\text{C}$, $5\text{ mA} \leq I_{OUT} \leq I_{MAX}$, (Note 2)		0.1	0.5	%
Thermal Regulation	$T_A = 25^\circ\text{C}$, 10 ms Pulse		0.04	0.2	%/W
Adjustment Pin Current			50	100	μA
Adjustment Pin Current Change	$5\text{ mA} \leq I_L \leq 100\text{ mA}$ $3V \leq V_{IN}-V_{OUT} \leq 40V$		0.2	5	μA
Reference Voltage	$3V \leq V_{IN}-V_{OUT} \leq 40V$, (Note 3) $10\text{ mA} \leq I_{OUT} \leq 100\text{ mA}$, $P \leq 625\text{ mW}$	1.20	1.25	1.30	V
Line Regulation	$3V \leq V_{IN}-V_{OUT} \leq 40V$, (Note 2)		0.02	0.07	%/V
Load Regulation	$5\text{ mA} \leq I_{OUT} \leq 100\text{ mA}$, (Note 2)		0.3	1.5	%
Temperature Stability	$T_{MIN} \leq T_J \leq T_{MAX}$		0.65		%
Minimum Load Current	$ V_{IN}-V_{OUT} \leq 40V$ $3V \leq V_{IN}-V_{OUT} \leq 15V$		3.5 2.2	5 3.5	mA
Current Limit	$3V \leq V_{IN}-V_{OUT} \leq 13V$ $ V_{IN}-V_{OUT} = 40V$	100 25	200 50	320 120	mA
Rms Output Noise, % of V_{OUT}	$T_A = 25^\circ\text{C}$, $10\text{ Hz} \leq f \leq 10\text{ kHz}$		0.003		%
Ripple Rejection Ratio	$V_{OUT} = -10V$, $f = 120\text{ Hz}$, $C_{ADJ} = 0$ $C_{ADJ} = 10\text{ }\mu\text{F}$	66	65 80		dB
Long-Term Stability	$T_A = 125^\circ\text{C}$		0.3	1	%

Note 1: Unless otherwise specified, these specifications apply $-25^\circ\text{C} \leq T_J \leq +125^\circ\text{C}$ for the LM337L; $|V_{IN}-V_{OUT}| = 5V$ and $I_{OUT} = 40\text{ mA}$. Although power dissipation is internally limited, these specifications are applicable for power dissipations up to 625 mW. I_{MAX} is 100 mA.

Note 2: Regulation is measured at constant junction temperature, using pulse testing with a low duty cycle. Changes in output voltage due to heating effects are covered under the specification for thermal regulation.

Note 3: Thermal resistance of the TO-92 package is 180°C/W junction to ambient with $0.4''$ leads from a PC board and 160°C/W junction to ambient with $0.125''$ lead length to PC board.